

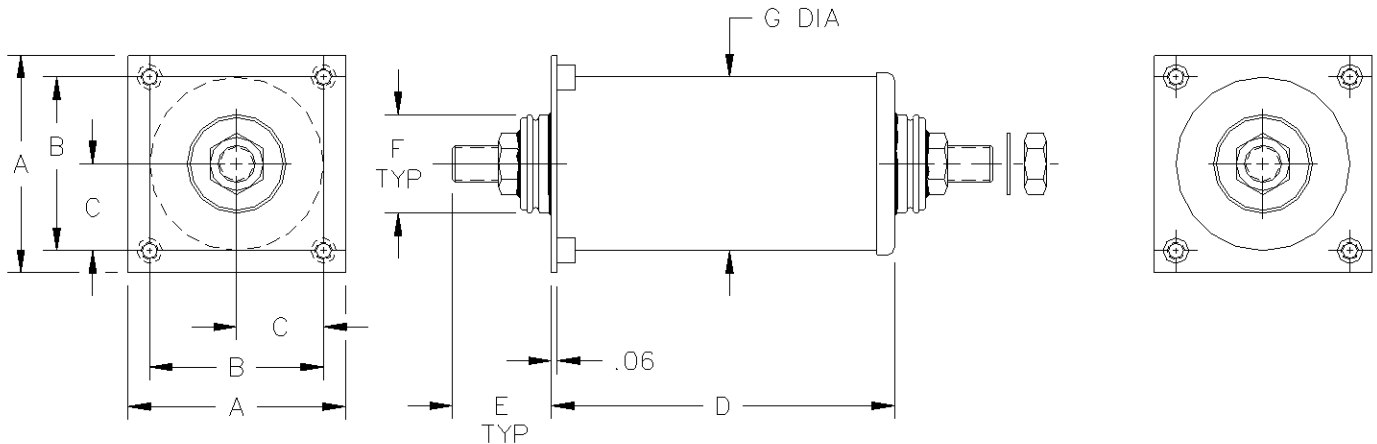
High Current Feedthru Capacitors

Voltage Rating	Termination	Part Number	Capacitance	Part Number	Capacitance	Part Number	Capacitance
100 VDC	10-32-UNF	FT-8300	0.5 μ F	FT-8301	1.0 μ F	FT-8302	5.0 μ F
	1/4-20-UNC	FT-8303		FT-8304		FT-8305	
	3/8-16-UNC	FT-8306		FT-8307		FT-8308	
	1/2-13-UNC	FT-8309		FT-8310		FT-8311	
400 VDC	10-32-UNF	FT-8312	0.5 μ F	FT-8313	1.0 μ F	FT-8314	5.0 μ F
	1/4-20-UNC	FT-8315		FT-8316		FT-8317	
	3/8-16-UNC	FT-8318		FT-8319		FT-8320	
	1/2-13-UNC	FT-8321		FT-8322		FT-8323	
125 VAC	10-32-UNF	FT-8324	0.1 μ F	FT-8325	0.5 μ F	FT-8326	1.0 μ F
	1/4-20-UNC	FT-8327		FT-8328		FT-8329	
	3/8-16-UNC	FT-8330		FT-8331		FT-8332	
	1/2-13-UNC	FT-8333		FT-8334		FT-8335	
250 VAC	10-32-UNF	FT-8336	0.1 μ F	FT-8337	0.5 μ F	FT-8338	1.0 μ F
	1/4-20-UNC	FT-8339		FT-8340		FT-8341	
	3/8-16-UNC	FT-8342		FT-8343		FT-8344	
	1/2-13-UNC	FT-8345		FT-8346		FT-8347	

Ratings and Characteristics

Tolerance	$\pm 10\%$
Insulation Resistance	$> 1000 M\Omega @ 100 VDC$
DWV for DC Rated Capacitors	2 x the rated voltage (VDC)
DWV for AC Rated Capacitors	4.2 x the rated voltage (VDC)
Operating Temperature Range	$-55^{\circ}C$ to $+85^{\circ}C$
Case and Terminal Material	Brass with electro tin-lead reflow finish
10-32-UNF Current Rating ^{1/}	0-36 Amps - Maximum torque: 18 lb•in
1/4-20-UNC Current Rating ^{1/}	0-62 Amps - Maximum torque: 30 lb•in
3/8-16-UNC Current Rating ^{1/}	0-140 Amps - Maximum torque: 100 lb•in
1/2-13-UNC Current Rating ^{1/}	0-250 Amps - Maximum torque: 250 lb•in
AC Rated Capacitors' Operating Frequency	50-400 Hz
Unit Mounting	10-32-UNF

^{1/} Add a C to the end of the part number to substitute a copper threaded terminal for 2X the current rating



Captor Part Number	A	B	C	D	E	F	G	H*
FT-8300, -8301, 8302	1.50	1.000	0.500	2.00	0.75	0.56	1.00	0.68
FT-8303, -8304, -8305	1.75	1.250	0.625	2.00	0.84	0.75	1.25	0.87
FT-8306, -8307, -8308	2.00	1.500	0.750	2.25	1.00	1.00	1.50	1.12
FT-8309, -8310, 8311	2.00	1.500	0.750	2.25	1.75	1.06	1.50	1.18
FT-8312, 8313	1.50	1.000	0.500	2.00	0.75	0.56	1.00	0.68
FT-8314	1.75	1.250	0.625	2.25	0.75	0.56	1.25	0.68
FT-8315, -8316	1.75	1.250	0.625	2.00	0.84	0.75	1.25	0.87
FT-8317	1.75	1.250	0.625	2.25	0.84	0.75	1.25	0.87
FT-8318, -8319, -8320	2.00	1.500	0.750	2.25	1.00	1.00	1.50	1.12
FT-8321, -8322, -8323	2.00	1.500	0.750	2.25	1.75	1.06	1.50	1.18
FT-8324, -8325, -8326	1.75	1.250	0.625	2.00	0.75	0.56	1.25	0.68
FT-8327, -8328, -8329	1.75	1.250	0.625	2.00	0.84	0.75	1.25	0.87
FT-8330, -8331, -8332	2.00	1.500	0.750	2.00	1.00	1.00	1.50	1.12
FT-8333, -8334, -83335	2.00	1.500	0.750	2.25	1.75	1.06	1.50	1.18
FT-8336	2.00	1.500	0.750	2.00	0.75	0.56	1.50	0.68
FT-8337	2.00	1.500	0.750	2.50	0.75	0.56	1.50	0.68
FT-8338	2.00	1.500	0.750	3.00	0.75	0.56	1.50	0.68
FT-8339	2.00	1.500	0.750	2.00	0.84	0.75	1.50	0.87
FT-8340	2.00	1.500	0.750	2.50	0.84	0.75	1.50	0.87
FT-8341	2.00	1.500	0.750	3.00	0.84	0.75	1.50	0.87
FT-8342	2.25	1.750	0.875	2.00	1.00	1.00	1.75	1.12
FT-8343	2.25	1.750	0.875	2.50	1.00	1.00	1.75	1.12
FT-8344	2.25	1.750	0.875	3.00	1.00	1.00	1.75	1.12
FT-8345	2.25	1.750	0.875	2.00	1.75	1.06	1.75	1.18
FT-8346	2.25	1.750	0.875	2.50	1.75	1.06	1.75	1.18
FT-8347	2.25	1.750	0.875	3.00	1.75	1.06	1.75	1.18