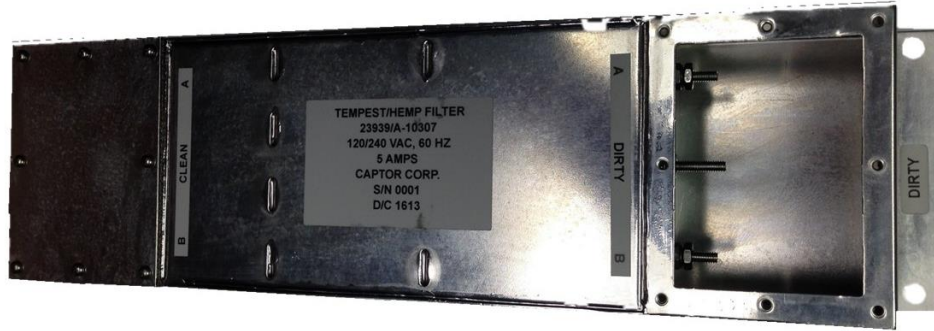


High Performance TEMPEST Filters



Specifications

◆ Voltage Rating	120/250 VAC @ 0-60 Hz
◆ Visual/Mechanical	Per MIL-PRF-15733, paragraph 4.6.1
◆ Capacitance	Per MIL-STD-202, Method 305 @ 1 kHz
◆ Insulation Resistance	1500 MΩ minimum per MIL-STD-202, Method 302
◆ Dielectric Withstanding Voltage	800 VDC line-to-line & line-to-chassis per MIL-STD-202, Method 301
◆ Insertion Loss	Per MIL-STD-220, 100dB 14 kHz – 10 GHz
◆ Voltage Drop	Less than 1% of rated voltage per paragraph 4.6.8 of MIL-PRF-15733
◆ Terminal Strength	Per MIL-PRF-15733 Paragraph 4.6.11
◆ Voltage Discharge	Discharge to less than 30 Volts within 30s after removal of power
◆ Threaded Terminals	8-32 UNC-2A
◆ Threaded Inserts	8-32 UNC-2B
◆ Operating Temperature	-55° C to +71° C
◆ Storage Temperature	-55° C to +105° C
◆ Chassis & Terminal Finish	Electro Tin-Lead
◆ Chassis Material	CRS

Features

- Individually filtered lines
- High performance TEMPEST Filters
- Alternate mounting means available
- Captor can supply enclosure housing with multiple filters
- Custom options available

Minimum Insertion Loss, 100 dB at 14 kHz to 10 GHz

Insertion Loss

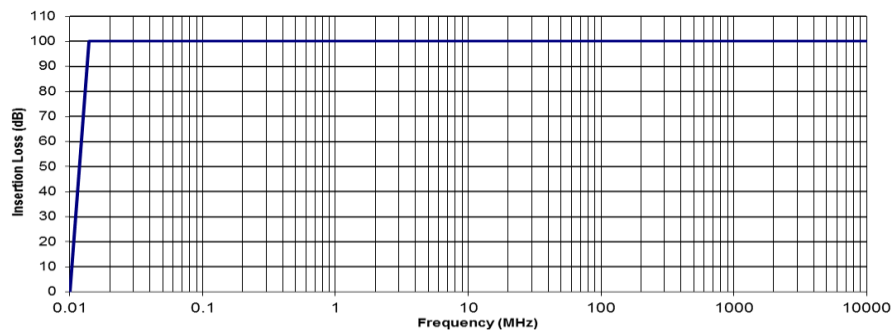


Figure 3

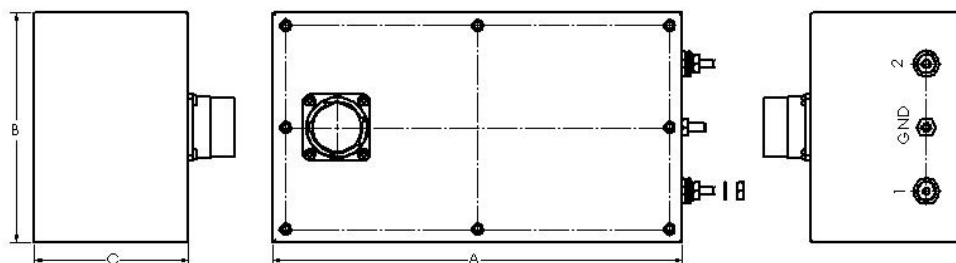


Figure 1

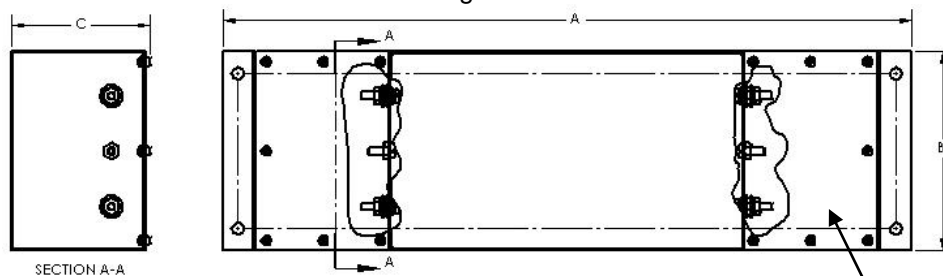


Figure 2

Knock outs can be added per customer requests

Part Number	Figure	Current	Major Dimensions (inch)			Leakage Current	Input Connections	Output Connections	Insertion Loss
			A	B	C				
A-10301	Fig 1	2.5 Amp	5.75	4.00	2.25	< .45 A	D38999/20WE6PN	8-32 Stud Assemblies	Fig 3
A-10302	Fig 1	5 Amp	6.75	4.00	2.25	< .9 A	D38999/20WE6PN	8-32 Stud Assemblies	Fig 3
A-10303	Fig 1	10 Amp	7.00	4.50	3.00	< 1.6 A	D38999/20WE6PN	8-32 Stud Assemblies	Fig 3
A-10304	Fig 1	15 Amp	8.00	6.00	3.00	< 2.2 A	D38999/20WE6PN	8-32 Stud Assemblies	Fig 3
A-10305	Fig 1	20 Amp	9.50	6.00	4.00	< 2.8 A	D38999/20WE6PN	8-32 Stud Assemblies	Fig 3
A-10306	Fig 2	2.5 Amp	14.25	4.00	2.4	< .45 A	8-32 Stud Assemblies	8-32 Stud Assemblies	Fig 3
A-10307	Fig 2	5 Amp	15.25	4.00	2.4	< .9 A	8-32 Stud Assemblies	8-32 Stud Assemblies	Fig 3
A-10308	Fig 2	10 Amp	15.50	4.50	3.1	< 1.6 A	8-32 Stud Assemblies	8-32 Stud Assemblies	Fig 3
A-10309	Fig 2	15 Amp	16.50	6.00	3.1	< 2.2 A	8-32 Stud Assemblies	8-32 Stud Assemblies	Fig 3
A-10310	Fig 2	20 Amp	18.00	6.00	4.1	< 2.8 A	8-32 Stud Assemblies	8-32 Stud Assemblies	Fig 3