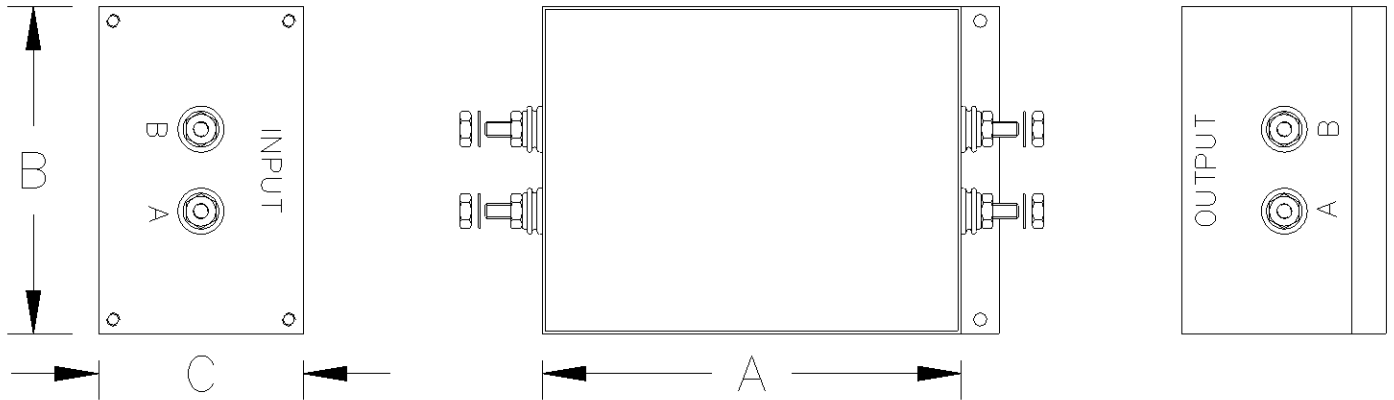


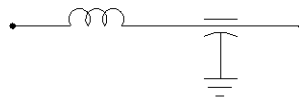
EMI Filters 125/250 VAC Single Phase



Specifications

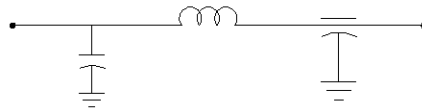
◆ Voltage Rating	125/250 VAC @ 50/60 Hz and 400 Hz
◆ Visual/Mechanical	Per MIL-PRF-15733, paragraph 4.6.1
◆ Insulation Resistance	1500 MΩ minimum per MIL-STD-202, Method 302
◆ DWV	1000 VDC line-to-line & line-to-chassis per MIL-STD-202, Method 301
◆ Insertion Loss	Per MIL-STD 220
◆ Voltage Drop	Less than 1% of rated voltage per paragraph 4.6.8 of MIL-PRF-15733
◆ Terminal Strength	Per MIL-STD-202, Method 211
◆ Operating Temperature	-55° C to +71° C
◆ Storage Temperature	-55° C to +105° C
◆ Threaded Terminals	10-32UNF-2A
◆ Threaded Inserts	10-32UNF-2B
◆ Bracket Mounting Holes	0.203" Diameter
◆ Chassis & Terminal Finish	Electro Tin-Lead
◆ Chassis Material	CRS

Single L



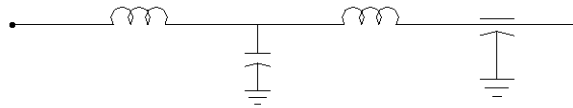
Captor Part Number	Current Rating Amps	A	B	C	Insertion Loss Curve
A-8980	1	3.00	2.50	1.50	Fig. 1
A-8981	5	3.50	2.50	1.50	Fig. 1
A-8982	10	4.00	2.50	2.00	Fig. 1
A-8983	15	4.50	3.00	2.50	Fig. 1
A-8984	25	4.50	3.50	2.50	Fig. 1

Single π



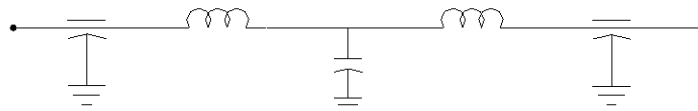
Captor Part Number	Current Rating Amps	A	B	C	Insertion Loss Curve
A-8985	1	3.50	2.50	1.50	Fig. 2
A-8986	5	4.00	2.50	1.50	Fig. 2
A-8987	10	4.50	2.50	2.00	Fig. 2
A-8988	15	5.00	3.00	2.50	Fig. 2
A-8989	25	5.00	3.50	2.50	Fig. 2

Double L



Captor Part Number	Current Rating Amps	A	B	C	Insertion Loss Curve
A-8990	1	4.00	2.50	1.50	Fig. 3
A-8991	5	4.50	3.00	2.00	Fig. 3
A-8992	10	5.00	3.50	2.25	Fig. 3
A-8993	15	6.75	3.50	2.50	Fig. 3
A-8994	25	6.75	4.00	2.50	Fig. 3

Double π



Captor Part Number	Current Rating Amps	A	B	C	Insertion Loss Curve
A-8995	1	5.00	2.50	2.00	Fig. 4
A-8996	5	5.50	3.50	2.00	Fig. 4
A-8997	10	6.00	4.00	2.50	Fig. 4
A-8998	15	6.00	4.75	2.50	Fig. 4
A-8999	25	6.00	5.25	2.50	Fig. 4

EMI Filters 125/250 VAC Single Phase

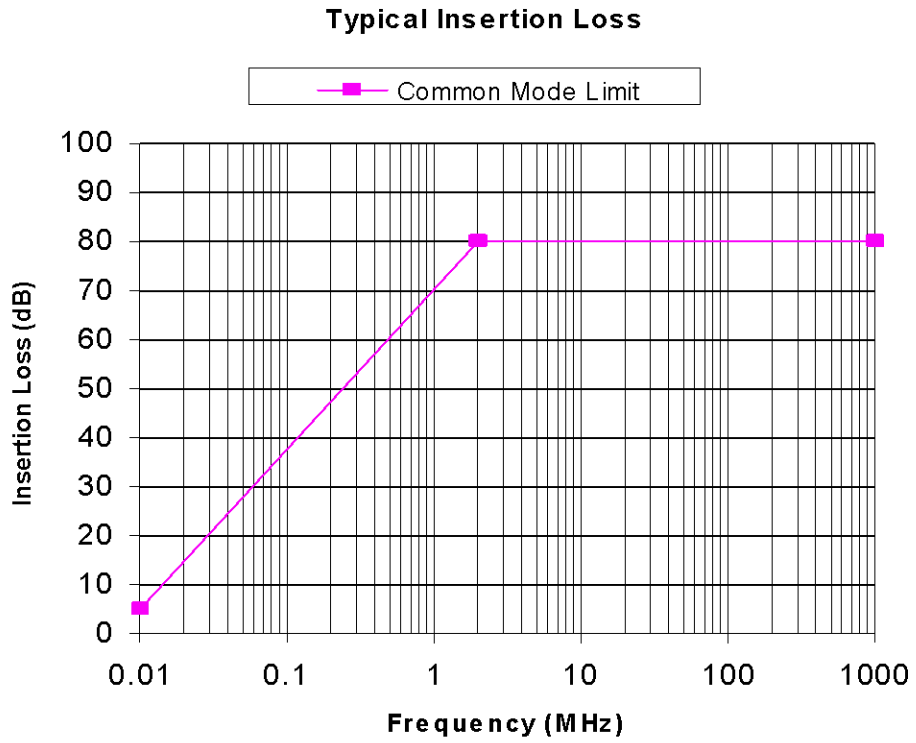


Figure 1

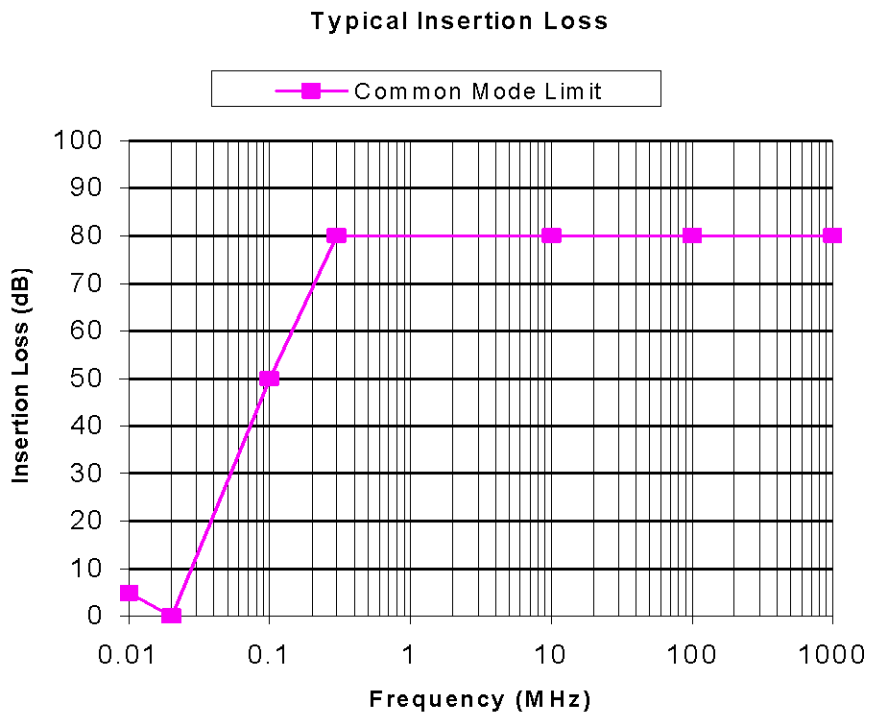


Figure 2

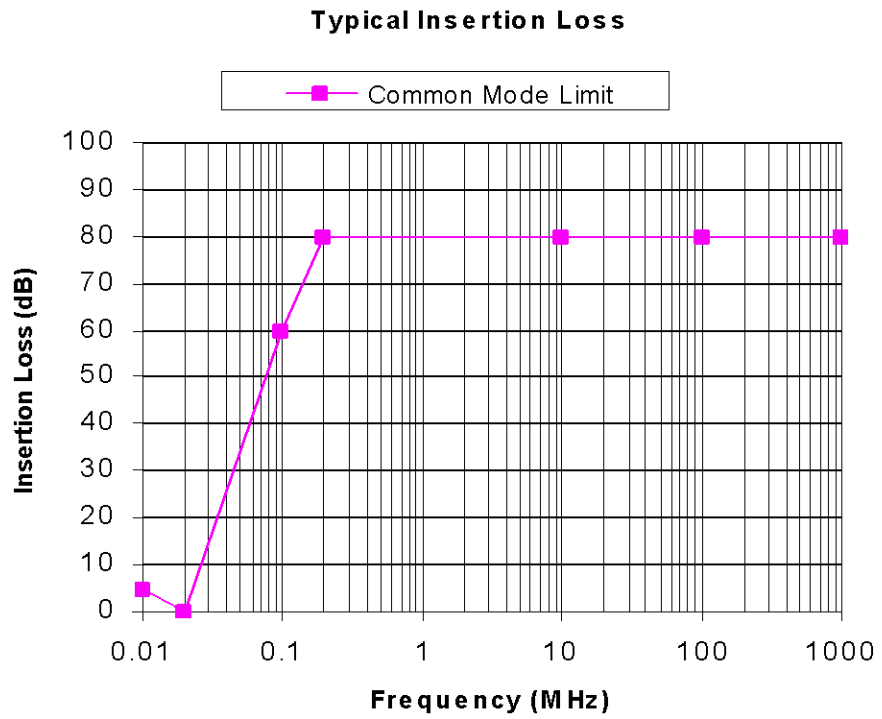


Figure 3

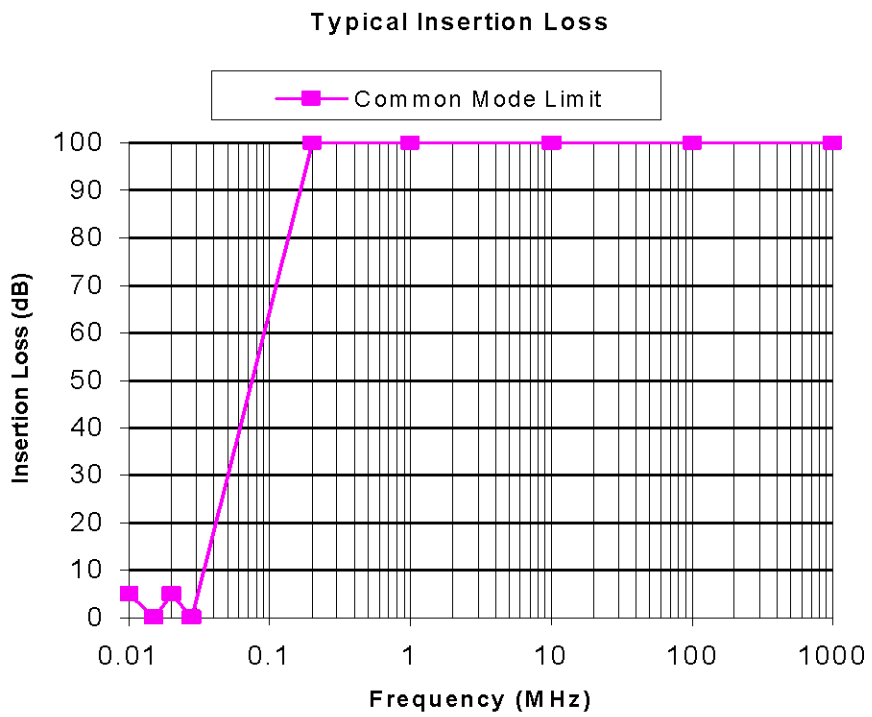


Figure 4